

Prescience Advantage® Tips & Tricks

August Edition:

What's New in Deltek Acumen?

A sound schedule is the key to a successful project. Many of our clients use Deltek Acumen to quickly diagnose and resolve project schedule shortcomings, reduce risk exposure, accelerate and align schedules with project goals and benchmark quality and performance.

If you've recently upgraded to the latest version of Deltek Acumen, you will have noticed the new and improved interface. As well as a new colour scheme, there are significant changes that enhance the appearance of all Acumen windows.

So, what else is new? New features included in this release make Deltek Acumen more effective in managing analysis, more customisable, and improve the user experience. Our Project Controls Support team has road tested and reviewed the new system and presented our findings in this edition of the Prescience Advantage® Tips & Tricks.



These tips are relevant for Deltek Acumen
Version 8.1.0

Earned Value Analysis Systems (EVAS) Metrics Updates

Deltek Acumen now provides a new Updated Metric Definition file that can be selected from the Options window. The new definitions significantly expand the available metrics for analysis and have the potential to help you better evaluate project performance.

You can easily create new custom Metric sets by copying any of the expanded metrics and / or manipulating the metrics as required.

The expanded metrics can be loaded from the Acumen Templates folder. Deselect the **Use Built in Metric** selection on the Deltek Acumen Options general tab and select the required metrics file.



IN THIS EDITION



EVAS
Metrics
Updates

Oracle
Primavera P6
Enhancements

Other
Enhancements

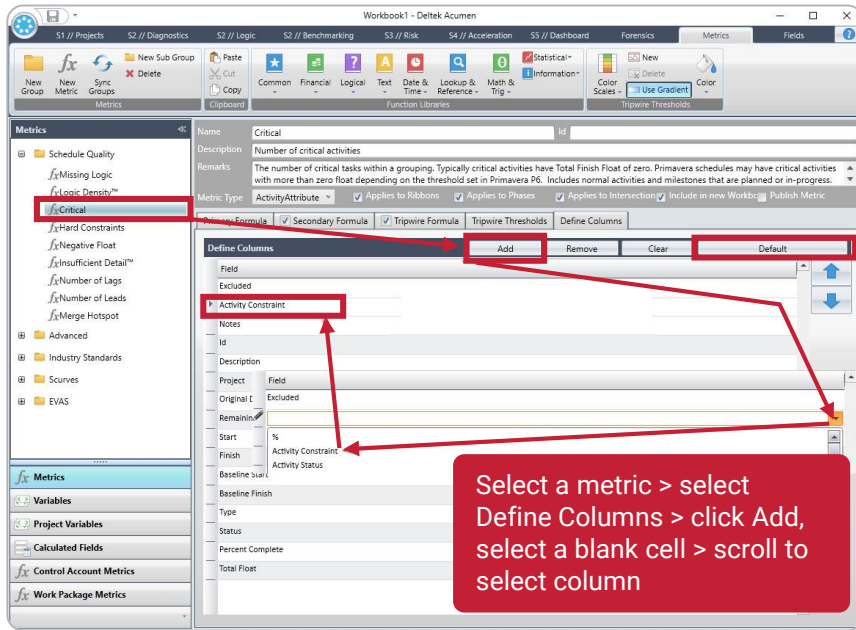
Earned Value Analysis Systems (EVAS) Metrics Updates

Uncheck, click on the ellipsis, select File, Open and OK. EVAS Metrics will load when a file is imported.

Snapshot of the expanded metrics in the S2 / Diagnostics tab.

Year	2012	2013	2014
0	2 (8%)	1 (7%)	1
2.17	2.27	2.27	
0 (0%)	10 (38%)	12 (80%)	1
N/A	2 (10%)	0 (0%)	0
0	2.5 (64%)	0 (0%)	0
N/A	0 (0%)	0 (0%)	0
0	15 (75%)	3 (21%)	1
0	1 (5%)	1 (7%)	0
N/A	1 (5%)	0 (0%)	0
100%	8%	67%	

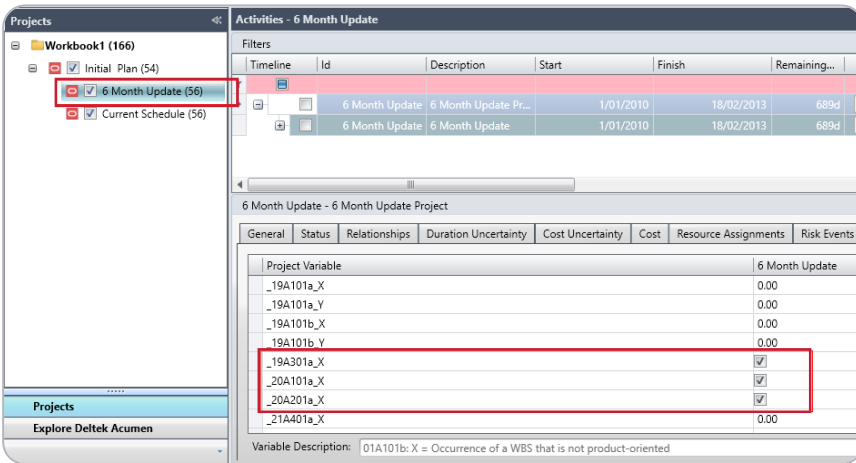
Other EVAS Updates



Custom Column List

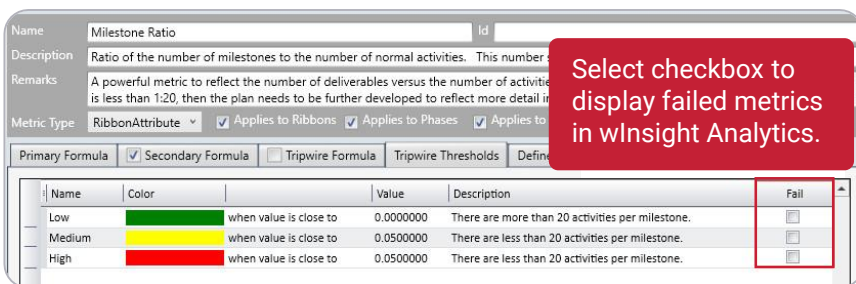
The new Custom columns feature provides users with more flexibility in selecting the data to be displayed for Metrics, Control Account Metrics, and Work Package Metrics. This drill-down feature further enhances the ability of Acumen Fuse in providing evaluation data on project performance.

On the Metrics tab, select the Define Columns tab click the Add button and select the required field to use, clicking Default will revert to the standard settings.



Snapshots & Project Variables

This feature copies Project Variables from existing Snapshots when a new snapshot is created. This helps in providing consistency in evaluating differences in different files.



Fail Column for WInsight Analytics

This feature allows you to define if a metric is a fail and improves analysis capability. You can now see fail states, which makes it easier to determine the acceptability of results when performing your analysis.

Other EVAS Updates

Fuse is using the Default Calendar to calculate duration. 5 days at 8 hours per day = 40.

Ribbon & Phase Scoring

Acumen considers each metric category (activity, control account, and work package metrics) during scoring. If there are no metrics for a particular category, that data type is not included as part of the score. For example, if there are no activity metrics, activities are not included in the score.

When none of the metrics in a group have tripwires, the ribbon and phase scores display as N/A.

Cobra Files & Status Date Fields

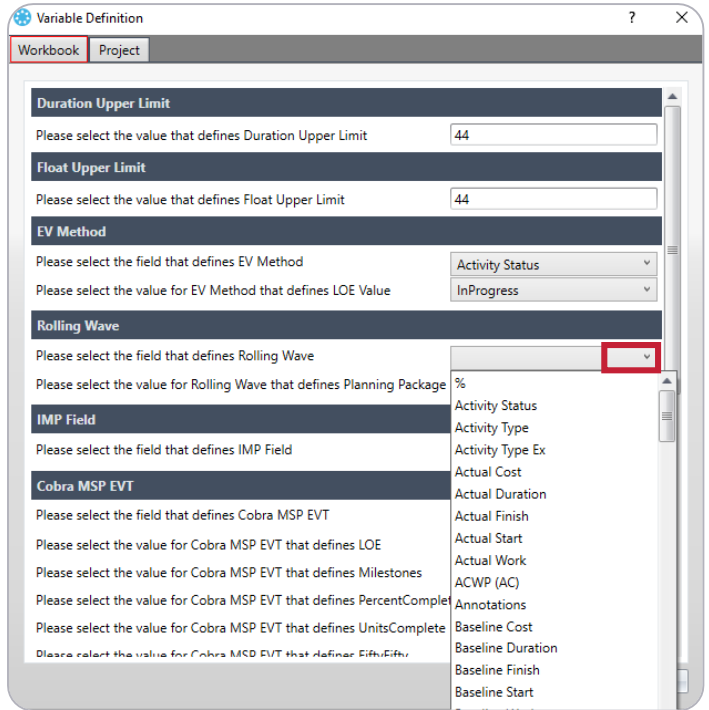
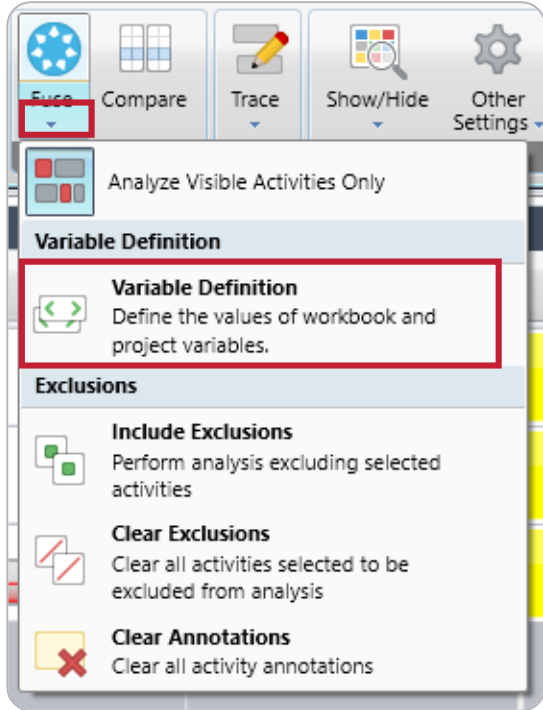
The Activity Details Pane General Tab now includes two new Cobra fields when you have selected the project:

- Original Cobra Path – This field displays the path and file name that was used when the Cobra project was imported.
- Cobra Status Date – This field displays the Cobra status date for the imported Cobra project.



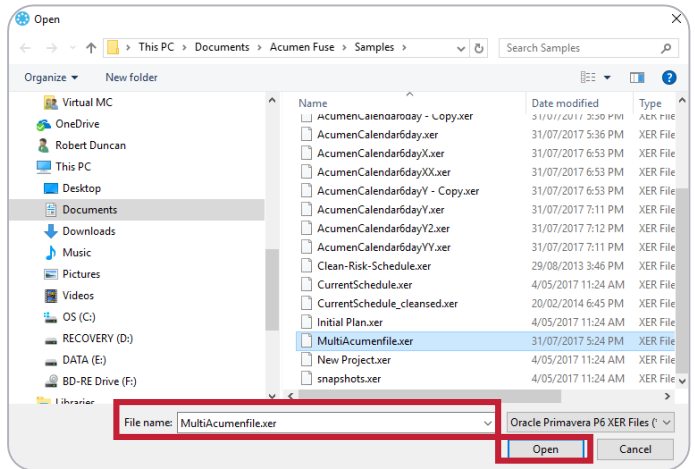
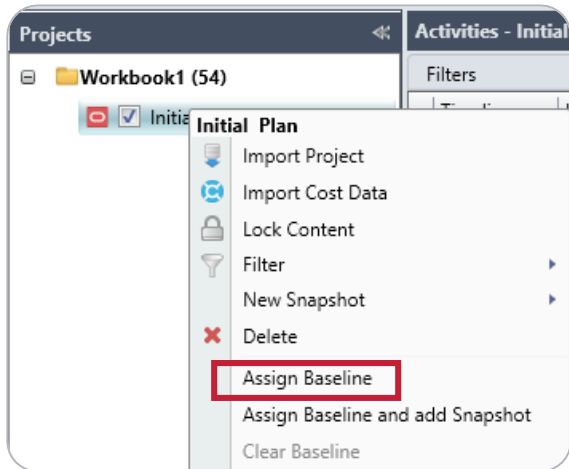
Display Field Variables

You can now select a field variable to display as a column on the S2 // Diagnostics tab and the Fuse Summary Metric Report. The values that display are the values from the field referenced in the field variable. This allows you to view the values that contribute to a metric score.



Oracle Primavera P6 Enhancements

You can now load a Multi-Project XER as a single Project Baseline. This feature provides flexibility in selecting an appropriate Baseline file that is contained in a Primavera XER file with multiple projects. With a Project selected in the S1 / Projects page, select Assign Baseline. Select the XER file containing the Baseline Files and open the file.





Forensic Analysis Wizard

When conducting Forensic Analysis, Acumen now provides the capability to select the correct sub-project when multiple sub-projects are contained in the file. In the Forensics page, click the Create Analysis button. From the file selection choose the base file and click Next. In the next window select the project or projects to use in the comparison.

After making the selection, set any additional fields for the analysis and then click finish. Analysis is then performed using the selected fields. This new feature provides greater flexibility when performing analysis when dealing with multi project workbooks.

The 'Forensic Analysis Wizard' dialog box contains the following comparison fields:

- Activity Status
- Activity Type
- Actual Cost
- Actual Duration
- Actual Finish
- Actual Start
- Actual Work
- ACWP (AC)
- Baseline Cost
- Baseline Duration
- Baseline Finish
- Baseline Start

The main software interface shows the following table of project data:

Analysis	Name	Start	Finish	Time Now	Baseline Start	Baseline Finish	Activities	Budget Duration	Actual Duration	Re
Initial Plan	Initial Plan	1/01/2010	31/01/2013	1/01/2010	1/01/2010	31/01/2013	54	1126.29	0	
Current Schedule	Current Schedule	1/01/2010	4/02/2014	1/03/2012	1/01/2010	4/02/2014	56	1495.27	564	

Default Workbook Display Settings

In the Deltek Acumen Options workbook tab, there are now two options available when creating Snapshots and importing projects. This means there are now two options to use the Primavera P6 Project Default Calendar or individual Activities Calendar to drive the detail in Acumen analysis in the S1 Projects Activity Grid. Each setting can provide a different outcome in Acumen.

Let's look at the difference it makes when we use each of the two settings. The file in the example below is from a Primavera P6 Project, with work being conducted on six day, ten hour calendar. The Pre Test task highlighted is four days duration and the resources work four ten-hour days for a total of 40 hours.

Resource ID Name	Original Duration	Remaining Duration	Budgeted Units	Budgeted Units / Time	Start	Finish	Price / Unit	Budg
PTDEEL.PT Design Engineer Electrical	4.00	4.00	40	10/d	25-Mar-17 07:00 AM	29-Mar-17 05:00 PM	\$200/h	
PTDEEL3.PT Design Engineer Electrical 3	4.00	4.00	40	10/d	25-Mar-17 07:00 AM	29-Mar-17 05:00 PM	\$200/h	
PTSDE.PT Senior Design Engineer	4.00	4.00	40	10/d	25-Mar-17 07:00 AM	29-Mar-17 05:00 PM	\$250/h	

When importing the file as a snapshot with the setting 'From Project Default Calendar', Acumen is using a calendar that is a five-day, eight hour calendar and does all calculations on the snapshot based on this calendar. The result below is for a four-day activity calculated as a five-day activity.

Resource	Units	Cost							
Name	Planned	Planned / Hr.	Actual	Remaining	Remaining / Hr.	Cost Based on...	Budget	Actual	Remaining
PT Design Engineer Elect...	40	1.00	0	40	1.00	<input checked="" type="checkbox"/>	\$8,000	\$0	\$8,000
PT Design Engineer Elect...	40	1.00	0	40	1.00	<input checked="" type="checkbox"/>	\$8,000	\$0	\$8,000
PT Senior Design Engineer	40	1.00	0	40	1.00	<input checked="" type="checkbox"/>	\$10,000	\$0	\$10,000

Default Workbook Display Settings

When importing the file as a snapshot with the setting 'From Activity Calendar', Acumen is using the Activities Calendar that is a six-day, ten hour calendar. In this instance, Acumen correctly calculates the duration of each activity. The result below shows a four-day Activity with ten hours per day. This change ensures that the Project snapshots in Acumen are more representative of the actual Primavera XER project.

The screenshot displays the 'Activities - Acumen Y' window. The top section is a grid with columns: Timeline, Id, Description, Start, Finish, Remaining..., Calendar, and Gantt Chart. The 'MPROJ2030 - Pre Test' row is highlighted with a red box, showing a duration of 5 days and a 'Trades - 5 Day Workweek' calendar. Below this, the 'MPROJ2030 - Pre Test' resource assignment table is shown with a red box around the 'Units' section.

Resource	Units		Cost							
Name	Planned	Planned / Hr.	Actual	Remaining	Remaining / Hr.	Cost Based on...	Budget	Actual	Remaining	
PT Design Engineer Elect...	40	1.00	0	40	1.00	<input checked="" type="checkbox"/>	\$8,000	\$0	\$8,000	
PT Design Engineer Elect...	40	1.00	0	40	1.00	<input checked="" type="checkbox"/>	\$8,000	\$0	\$8,000	
PT Senior Design Engineer	40	1.00	0	40	1.00	<input checked="" type="checkbox"/>	\$10,000	\$0	\$10,000	

Other Enhancements in Deltek Acumen Fuse

Report Enhancements

- The Fuse Summary Metric Report now includes tabs for metric groups that were not included previously for one of several reasons:
 - All the metrics may have passed in the current period. This prevented you from viewing the trend on these metrics.
 - All the metrics may have not included tripwires as they may have been manual tests.
 - A combination of the above conditions
- It also includes a Details table for each metric in a group, regardless of whether the metric passes or fails the test for the current period.
- Additional hyperlinks are now included to navigate to the new tabs and tables.

Metrics Filter Operation

- Metric filters now include C – Contains. This change makes creating filter criteria more effective depending on what the filter is required to do.

New Fields

- Previous Actual Start and Finish fields have been added, copying Actual Start and Finish from snapshots in the workbook. The feature is great when added to the Activity grid so users can easily see shifts in dates when analysing work in the S1 Project Activity Grid.

Contact

Prescience Technology is Deltek's exclusive Acumen Partner in Australia. Get in touch to find out how the Acumen suite can help your organisation deliver projects with greater ease, speed and effectiveness.



1300 661 096

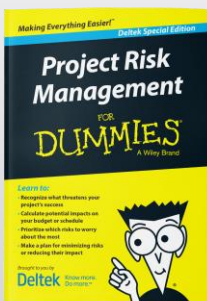


padv.support@prescience.com.au

Next Month's Topic

Activity Calendars & Durations... The Missing Link

Next month we will examine why changing an Activity's Calendar in P6 can have an effect on the Activity's Duration... and how to fix it.



PROJECT RISK MANAGEMENT

Download the Deltek Special Edition eBook to find out more about project risk management and Acumen Risk.

[DOWNLOAD NOW](#)